

INSTRUCTIONS DE COURSE**APPENDIX 6****LEG 2****SANTA CRUZ DE LA PALMA – SAINT FRANÇOIS (GUADELOUPE)****A6.5 SIGNALS MADE ASHORE**

A6.5.1 Signals made ashore will be displayed on the flat*g pole located at the top of the walkway to the pontoons of the Marina La Palma of Santa Cruz de La Palma.

A6.6 SCHEDULE

Friday October 29, 2021	
From 11 :00 am (1)	Towing out of the boat from the Marina
02 :52 pm (1)	1 st warning signal

(1) local time

A6.9 RACE AREA

Race area is between Santa Cruz de La Palma and Saint-François in Guadeloupe.

A6.10 COURSE

Marks	Side	Position
Start in Santa Cruz de La Palma between port and starboard's marks		Port mark : 28°41.107 N – 17°44.618 W Starboard mark : 28°41.275 N – 17°45.370 W
Hiero island	To be left on starboard	
Way Point	To be left on starboard	25°N – 30°W
Terre de Bas South special mark	To be left on starboard	16° 09' 48" N - 61° 06' 28" W
Terre de Bas SW special mark	To be left on starboard	16° 09' 17" N - 61° 07' 48" W
Terre de Bas W special mark	To be left on starboard	16° 10' 30.76" N - 61° 08' 29" W
Arrival in Saint-François between the Committee boat to be left on starboard and finishing mark to be left on port		Committee boat : 16°14.733 N – 61°14.590 W Finishing mark: 16°14.720 N – 61°14.640 W

A6.11 MARKS

Mark	Description
Start starboard	« Real Club Nautico La Palma » Ovoid yellow buoy
Start port	Yellow cylindrical buoy
Arrival starboard	Committee boat (with orange flashing light by night)
Arrival port	Yellow cylindrical buoy

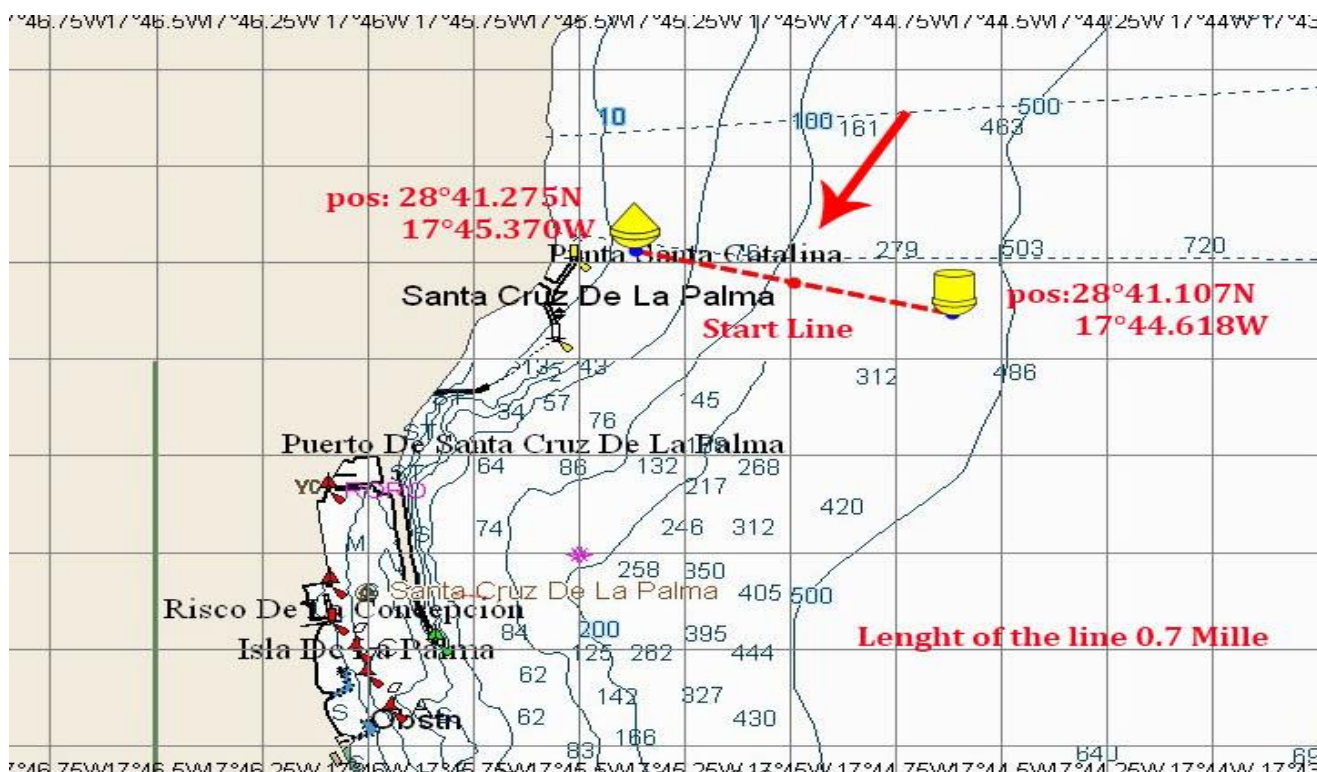
A6.13 START

A6.13.1 Start will comply with RRS, changed as follows:

Minutes before start	Visual	Sound	Meaning
8'	Classe Mini flag	One	Warning signal
4'	P, I, Z, Z/I flag	One	Preparatory
1'	Preparatory flag down	One long or whistle	Minute
0'	Classe Mini flag down	One	Starting signal

A6.13.2 Starting line will be between both course's sides of the starting marks.

[DP] When a duly identified race committee boat is close to the starting mark, competitors must not pass between the mark and the boat from the preparatory signal till they have crossed the starting line. Any infringement to this rule will be subject to a protest from the Race Committee and can result of a minimum **30 minutes** penalty after hearing from the protest committee.

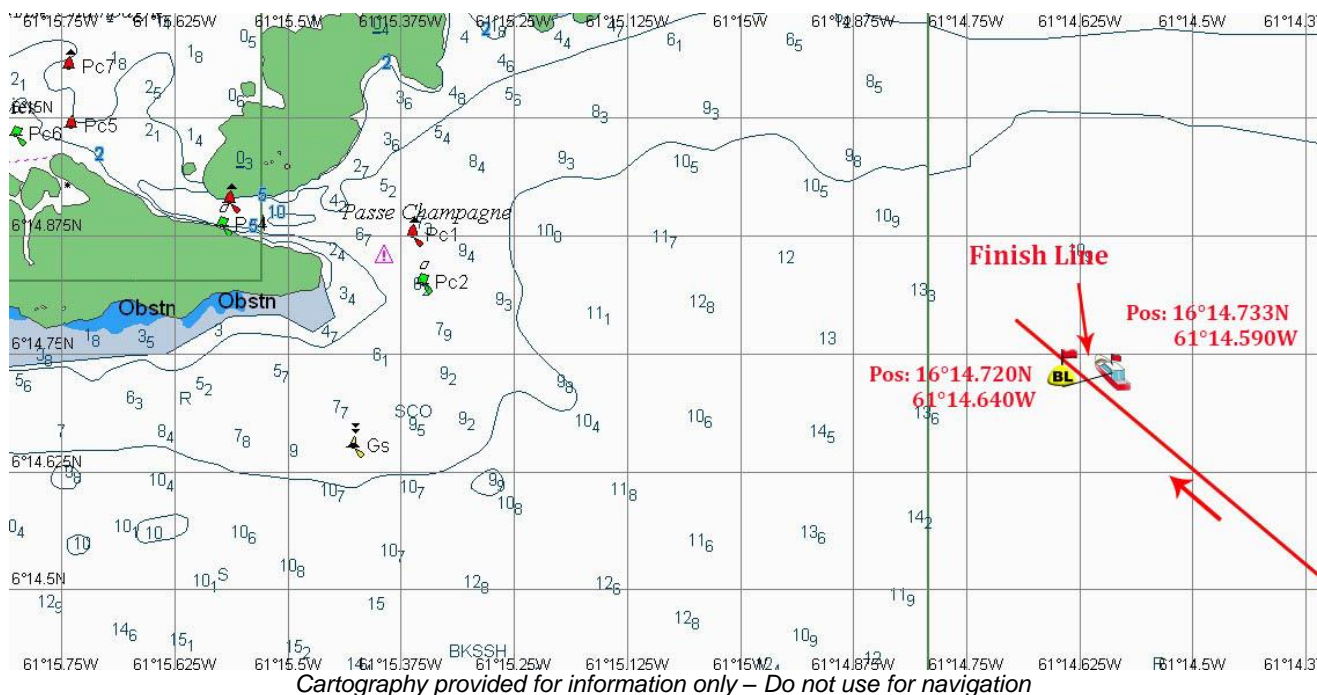


Cartography provided for information only – Do not use for navigation

A6.14 FINISHING

Finishing line in Saint-François will be between the mast displaying a blue flag on the Committee Boat on starboard and the course's side of the arrival mark on port.

Race Committee boat will be with an orange flash light by night.



A.6.24 OFFICIAL BOATS

Official boats are identified as follows :

<p>Race Committee</p>	
-----------------------	--