

APPENDIX 3

PROLOGUE - PARADE IN LES SABLES D'OLONNE

A3.3 COMMUNICATION WITH COMPETITORS

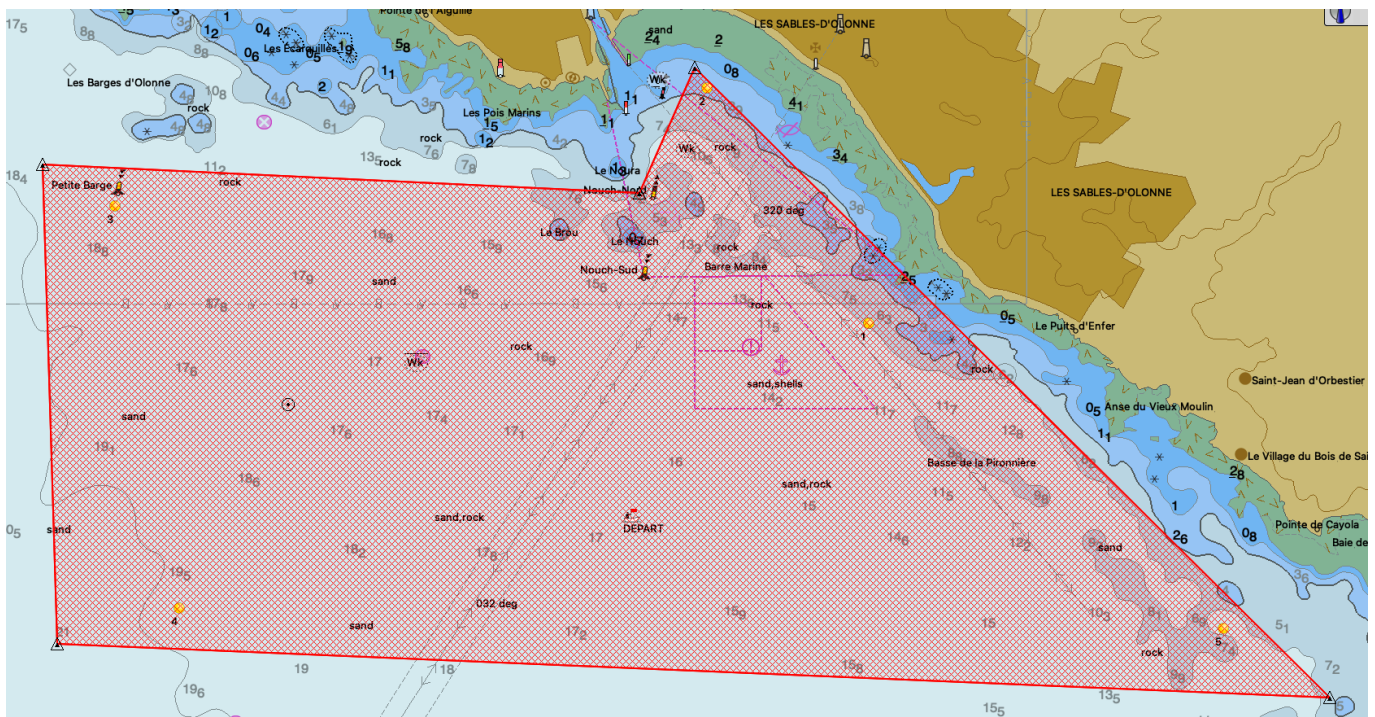
The Race Committee will communicate with competitors on VHF Channel 77.

A3.6 SCHEDULE

Wednesday Septembre 22 20221	
Starting from 09:30am	Towing out of the boats
12:30 pm	Opening of the starting line
Starting from 03:30 pm	Towing in of the boats

A3.9 RACE AREA

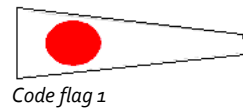
The area of the parade is located in the bay of les Sables d'Olonne.



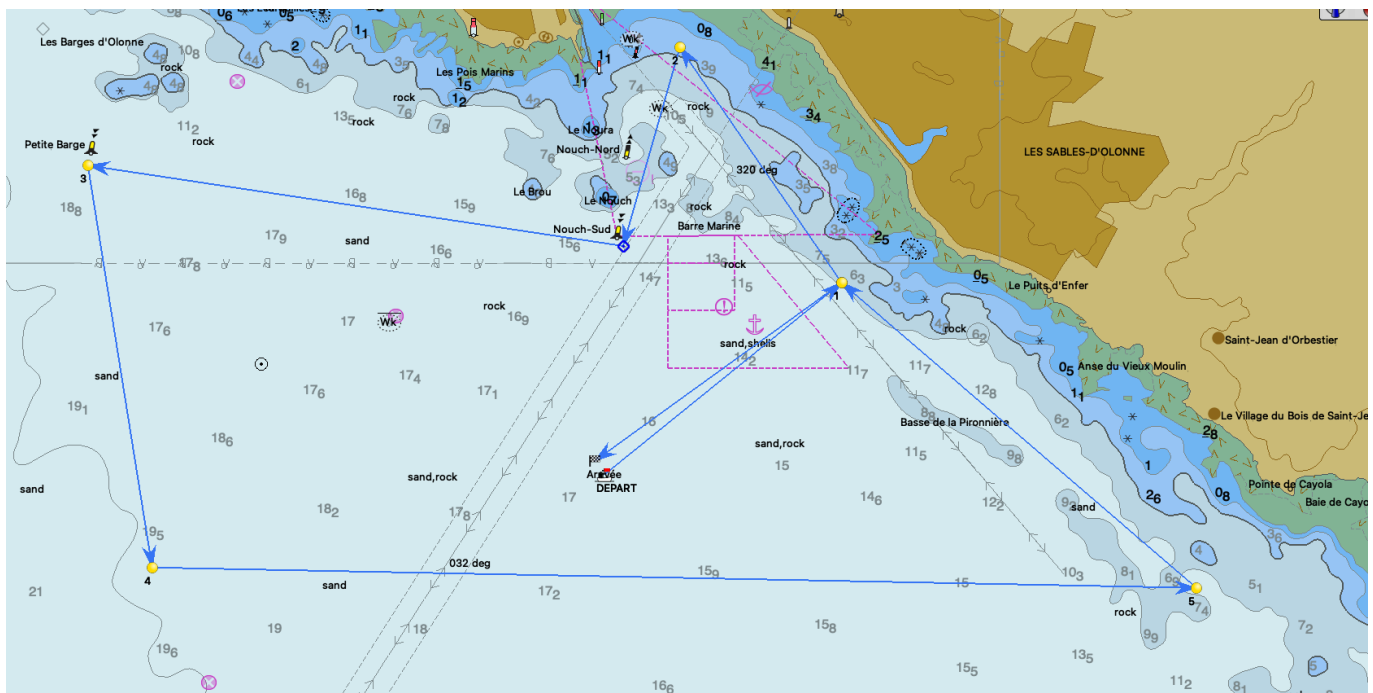
Parade area

A3.10 COURSE

A.3.10.1 COURSE #1 (15 nm)



MARK	Side	Position
Start between the committee buoy and an orange cylindrical buoy		46°27.5N – 001°47.4W
Buoy #1 – Yellow cylindrical	To be rounded and left on port	46°28.3N – 001°46.0W
Buoy #2 – Yellow cylindrical	To be rounded and left on port	46°29.1N – 001°47.0W
Cardinal South « Nouch Sud »	To be rounded and left on starboard	46°28.5N – 001°47.4W
Buoy #3 – Yellow cylindrical	To be rounded and left on port	46°28.8N – 001°50.6W
Buoy #4 – Yellow cylindrical	To be rounded and left on port	46°27.1N – 001°50.2W
Buoy #5 – Yellow cylindrical	To be rounded and left on port	46°27.0N – 001°43.8W
Buoy #1 – Yellow cylindrical	To be rounded and left on port	46°28.3N – 001°46.0W
Arrival between the committee boat and orange cylindrical buoy		46°27.5N – 001°47.4W

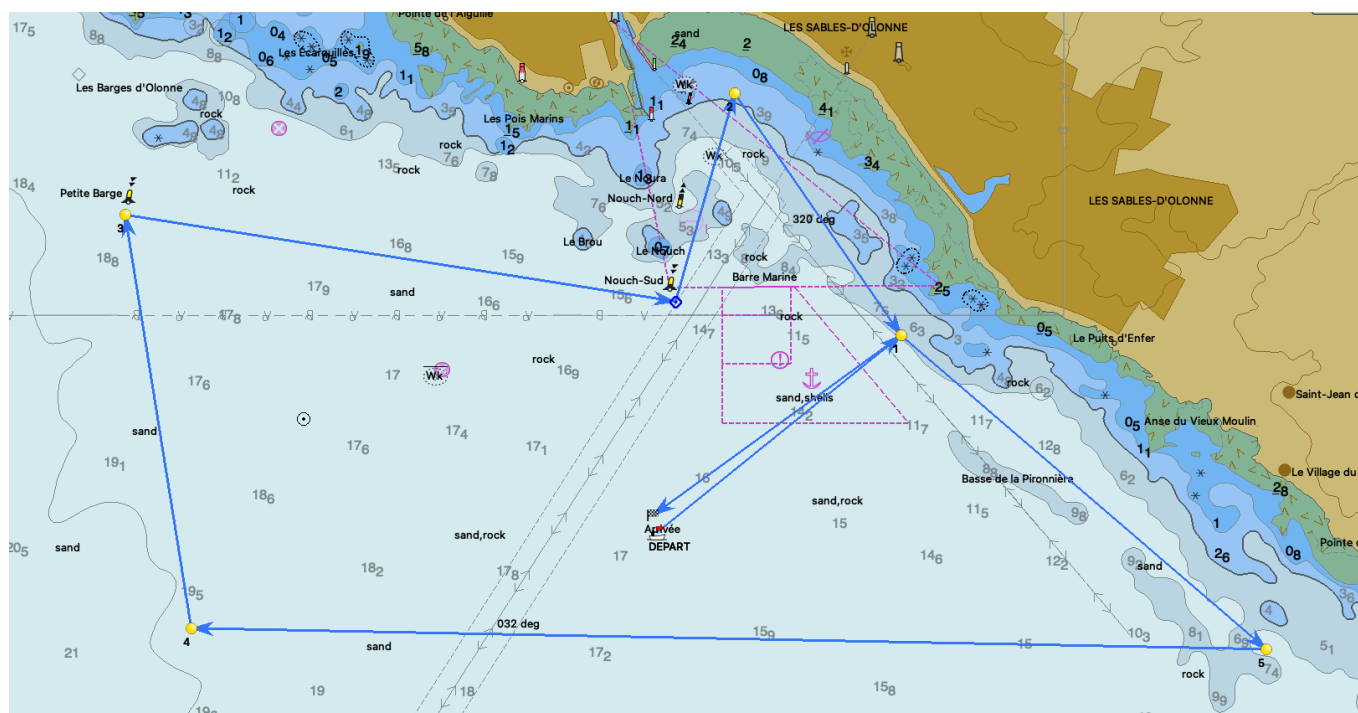


A.3.10.2 COURSE #2 (15 nm)



Code flag 2

Mark	Side	Position
Start between the committee buoy and an orange cylindrical buoy		46°27.5N – 001°47.4W
Buoy #1 – Yellow cylindrical	To be rounded and left on starboard	46°28.3N – 001°46.0W
Buoy #5 – Yellow cylindrical	To be rounded and left on starboard	46°27.0N – 001°43.8W
Buoy #4 – Yellow cylindrical	To be rounded and left on starboard	46°27.1N – 001°50.2W
Buoy #3 – Yellow cylindrical	To be rounded and left on starboard	46°28.8N – 001°50.6W
South cardinal « Nouch Sud »	To be rounded and left on port	46°28.5N – 001°47.4W
Buoy #2 – Yellow cylindrical	To be rounded and left on starboard	46°29.1N – 001°47.0W
Buoy #1 – Yellow cylindrical	To be rounded and left on starboard	46°28.3N – 001°46.0W
Finish between the committee boat and orange cylindrical buoy		46°28.4N – 001°46.3W



A.3.11 MARKS

A.3.11.1

Mark	Description
Start	Orange cylindrical buoy
Offcet	Blue cylindrical buoa
Course	Yellow cylindrical buoy
Finish	Orange cylindrical buoye

A.3.11.2 Self-checking
 SI 11.2 does not apply.

A.3.12 AREAS THAT ARE OBSTRUCTIONS

The areas that are considered as obstruction are the Dangers of the plateau des Barges, Nouch and its extension - the Noura (navigation forbidden between between Nouch South and North and between Nouch North and the main pier's lighthouse).

Commercial vessels stationed in the waiting zone and those proceeding in the the axis of the channel are considered as obstruction.

A.3.13 START

A3.13.1 the start will be made as per RRS 26, changed as follows:

Minutes before the starting signal	Visual signal	Sound signal	Meaning
8'	Class MINI flag	One	Warning signal
4'	P flag	One	Preparatory signal
1'	Preparatory flag removed	One long or whistle	Minute
0'	Class flag removed	One	Starting signal

A.3.13.2 The starting line will be between a staff displaying an orange flag on the race committee boat at the starboard end and the course side of the starting mark such as defined in A.3.11.

A.3.14 FINISH

The finishing line will be between a staff displaying a blue flag on the race committee boat and the finishing line such as defined in A.3.11.

A.3.16 TIME LIMITS

No time limit is set.

A.3.18 SCORING

There will be no scoring.

A.3.19 SAFETY RULES

A.319.1 Signing
A signing (in and out) may be set up. Details will be communicated during the briefing « Prologue ».

A.319.2 Retirement
A boat leaving the parade area shall inform the race committee by VHF as soon as possible (Channel 77)

A.3.19.3 Radio watch - AIS - tracker
VHF channel for the race is 77.
Competitors shall keep permanent watch on both channel 16 and 77.
AIS transponders of each boat shall be on function (transmission and reception).

A.3.19.8 Use of appendages :

Competitors must comply with rule E-18 of the 2021 Guide Mini.