

## SAILING INSTRUCTIONS

**AMENDMENT #4****CHANGES TO THE SAILING INSTRUCTIONS**

This amendment cancels and replaces

- paragraphs A4.10, A4.11 and A4.14 of appendix 4;
- changes to the sailing instructions of the amendment#3.

**A4.10 COURSE**

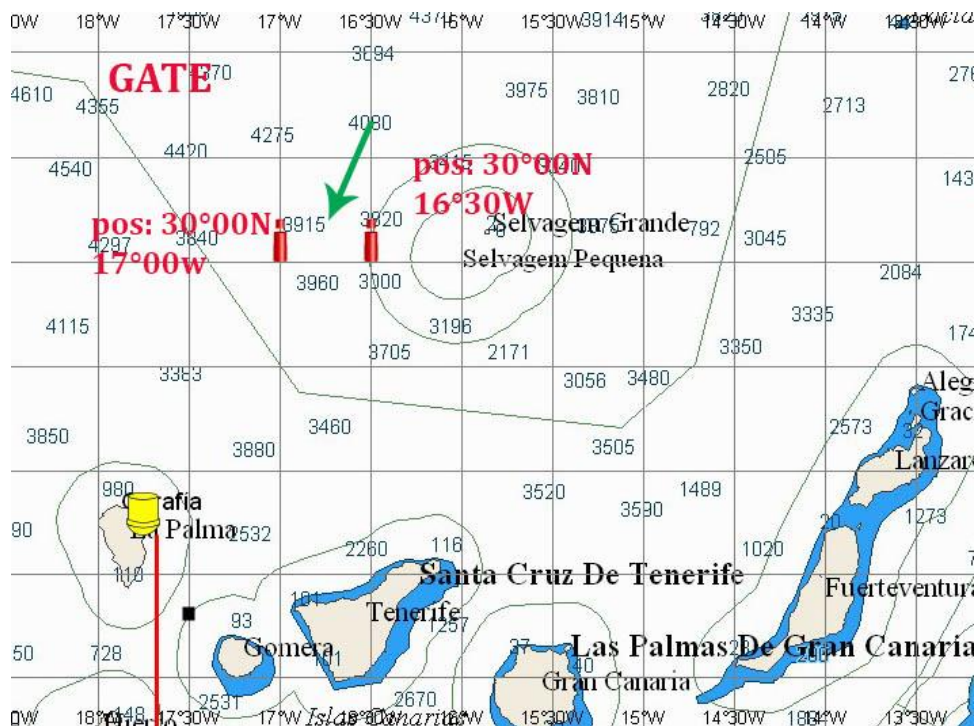
Marks	Required side	Position
Start – Les Sables d’Olonne between the RC flag boat on starboard and an RC boat on port		0,5 nm in the center of the start area in 46°27,513' N – 001°46,662' W
Spreader mark cylindrical blue if there is one		2 nm windward of the starting line
Virtual gate		W point : 30N 17.00W E point : 30N 16.30W
Finish Santa Cruz de La Palma		

**A4.11 MARKS**

Definition of the virtual gate :

Marks	Position
West virtual mark	30°00N – 17°00W
East virtual gate	30°00N – 16°30W

SAILING INSTRUCTIONS



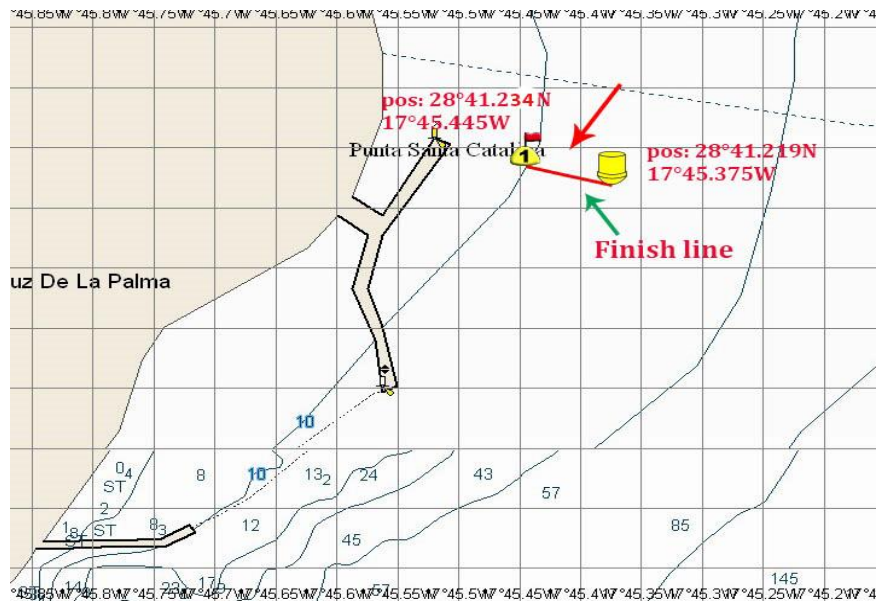
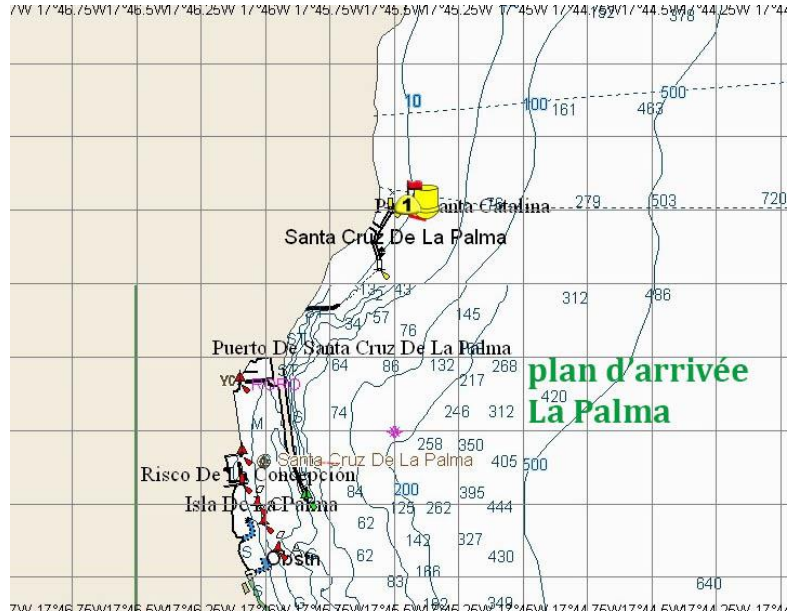
**A4.14 FINISHES**

A.14.1 Finish Line course 1

The finish line in Santa Cruz de La Palma will be on both course's sides of 2 yellow cylindrical buoys located 0,8 nm North of the entry of the harbour.

Marks	Position
West buoy	28°41.234N – 17°45.445W
East buoy	28°41.219N – 17°45.375W

## SAILING INSTRUCTIONS





Les Sables d'Olonne • Santa Cruz • Saint-François



## SAILING INSTRUCTIONS

### A.14.2 Official scoring at the virtual gate

The Race Committee may shorten the race according to one of the causes provided for in RRS 32.1 and validate it by using the official scoring at the virtual gate as the order of arrival (this changes RRS 32).

The virtual gate is a gate where an official scoring is carried out. If subsequently, the race director and race committee decide to stop the race, this official scoring will be taken into account as the order of arrival.

The Race Director  
Denis HUGUES

The President of Race Committee  
Hervé CHASTEL

Published on le 25/09/2021 at 17 h52